

IPS-EPIS™ Executive

Relay and Instrument Transformer Maintenance Management

IPS-EPIS™ Executive

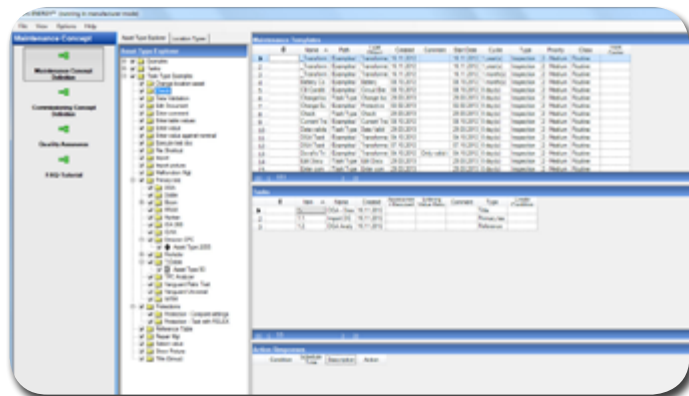
IPS-EPIS™ Executive is the extension of IPS-EPIS™ Core Edition extended with the innovative Module Groups Maintenance Concept and Work Execution. This Edition allows managing of the mobile execution and reporting of maintenance and commissioning, limited to protective relays and instrument transformer. Available as part of IPS-SYSTEMS™ or as an add-on to ERP.

IPS-EPIS™ Executive provides you functionalities from IPS-EPIS™ Basic and Core and also extended solutions for:

- Maintenance and commissioning concept management
- Management of maintenance actions (on assets and locations)
- Administration of the actions assigned with work orders
- Management of action groups
- Overview about every action and notification
- Management of maintenance and commissioning notifications and follow-up actions
- Definition of action templates
- Customizable tutorial module
- Condition-based assessment calculation
- Mobile data collection and mobile maintenance execution
- Condition-based maintenance
- Replacement (Renewal) management

Included Module Groups:

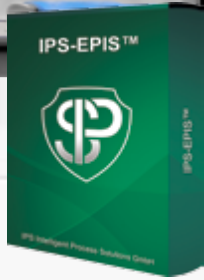
- Asset Management (Protection Assets only)
- Maintenance Concept
- Work Execution
- IPS-RELEX™
- IPS-PSM™



IPS-EPIS™ Executive HIGHLIGHTS:

- Enables the implementation of a consistent and optimized maintenance strategy
- Through the flexibility and intelligence of the system any maintenance strategy can be presented in the strategy tree
- Traffic-light function for easy control
- Use of predefined action templates
- Included activities history
- Allocation of activities to ex-/internal work orders
- Automatic notifications including follow-up actions (depending on the result)
- Result import from various test software like Doble, OMICRON, etc.
- Extensive maintenance statistic functionalities
- Already implemented VDE-0109-2 maintenance measures
- Condition-based assessment calculation
- Definition of time-, condition- or logic-based strategy
- Data condition-based notifications





IPS-EPIS™ Executive

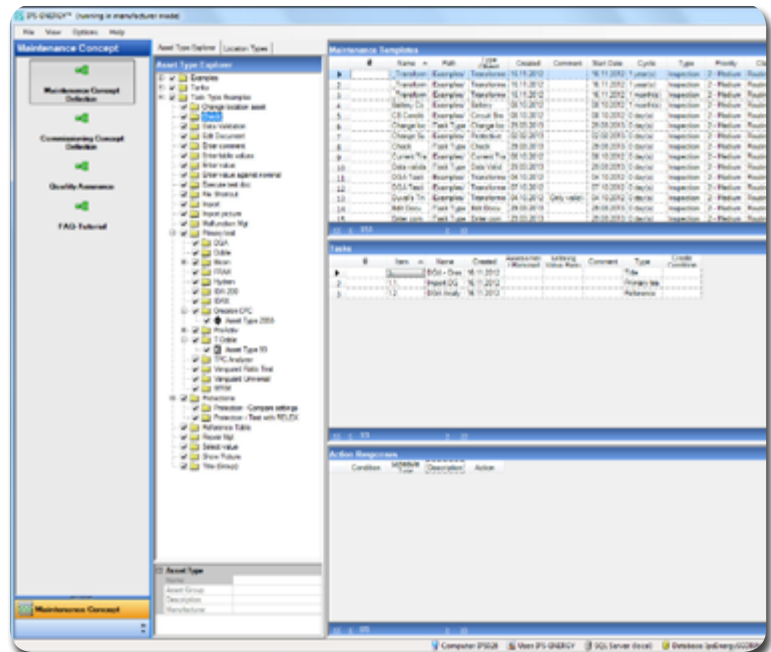
Relay and Instrument Transformer Maintenance Management

IPS-EPIS™ Executive | Included Module Groups

Maintenance Concept

(limited to protection and instrument transformer assets)
 (more detailed information in chapter "IPS-Module Groups")

- Time-, condition- or logic-based maintenance concept definition
- Commissioning Concept Definition
- Quality Assurance
- FAQ-Tutorial
- Creating and management of maintenance strategies through the definition of maintenance (action) templates with any number of tasks and automated responses based upon task results for both
 - Asset-types
 - Location-types
- Customer specific maintenance template definition
- Customer specific commissioning template definition
- Management of quality assurance templates
- Management of customer specific tutorial templates



Work Execution

(limited to protection and instrument transformer assets)
 (more detailed information in chapter "IPS-Module Groups")

- Mobile result collection
- Management maintenance actions on assets
- Maintenance history for each asset
- Maintenance activity status
- Management maintenance actions for locations
- Maintenance history for locations
- Dynamic maintenance templates (condition-based)
- Management of action groups
- Overview about all actions and their corresponding tasks
- Wide filtering and statistic possibilities
- Traffic-light supervision and prioritization
- Creating, editing, managing of notifications and follow-up actions
- Automatic notification as the result of the maintenance task result
- Email functionality and management
- Condition-based automatic notifications
- Complex result management
- Import result from test devices
- Test automation with OMICRON CMC

