

IPS-EPIS™ Enterprise

Relay and Instrument Transformer Planning and Scheduling

IPS-EPIS™ Enterprise

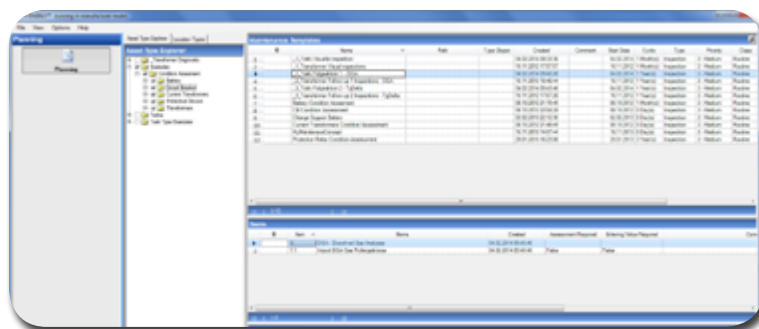
IPS-EPIS™ Enterprise is an extension of our IPS-EPIS™ Executive Edition with the Module Groups Maintenance Planning and Work Ordering. This Edition is our comprehensive product for planning, analysis and evaluation of maintenance and work ordering management, limited to protective devices and instrument transformers. IPS-EPIS™ Enterprise can be used as standalone or as a supplement to generic Enterprise Asset Performance Management Solution or ERP.

IPS-EPIS™ Enterprise includes all functionalities from IPS-EPIS™ Basic, Core and Executive plus the following solutions for:

- Operational planning (time-, condition- or logic-based)
- Plan execution supervision
- Work ordering (standalone or interaction with ERP)
- Work order management
- Maintenance improvement management
- Maintenance accomplishment evaluation
- Analysis of the maintenance performance
- Maintenance scheduling
- Resource planning (financial or quantity)
- Resource work allocation
- Work force management
- Asset replacement planning

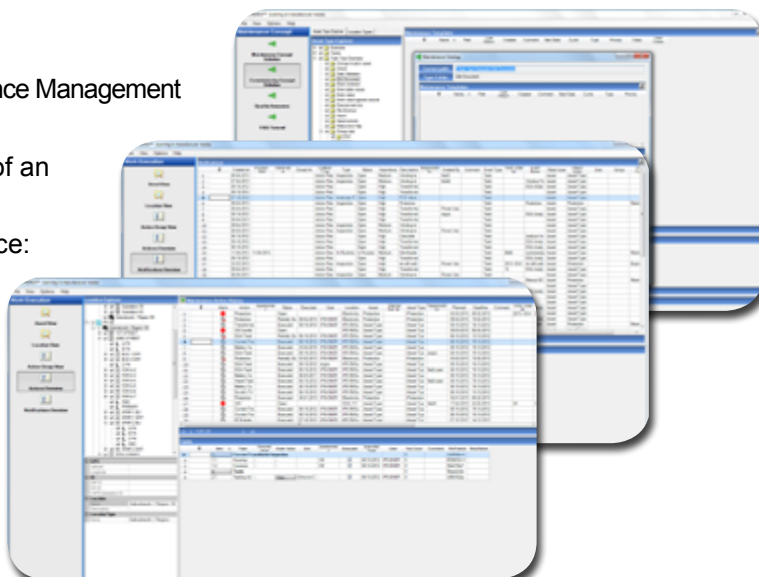
Included Module Groups:

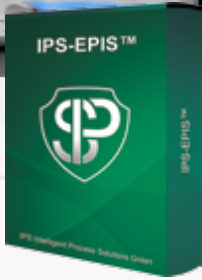
- Asset Management (Protection Assets only)
- Maintenance Concept
- Planning
- Work Ordering
- Work Execution
- Maintenance Analysis
- IPS-RELEX™
- IPS-PSM™



IPS-EPIS™ Executive HIGHLIGHTS:

- Standalone or integrated with ERP or generic Asset Performance Management
- Logic-, condition-, or risk-based planning
- Efficient technical operational planning, through the use of an intelligent and user-friendly planning wizard
- Supervision and reporting of the maintenance performance:
 - Planned - not executed
 - Planned - executed
 - Not planned - but executed
- Planning of resource requirements
- Support of the work force management process
- Documentation of the process improvements
- Generation of work packages, including assignment of internal and external work orders





IPS-EPIS™ Enterprise

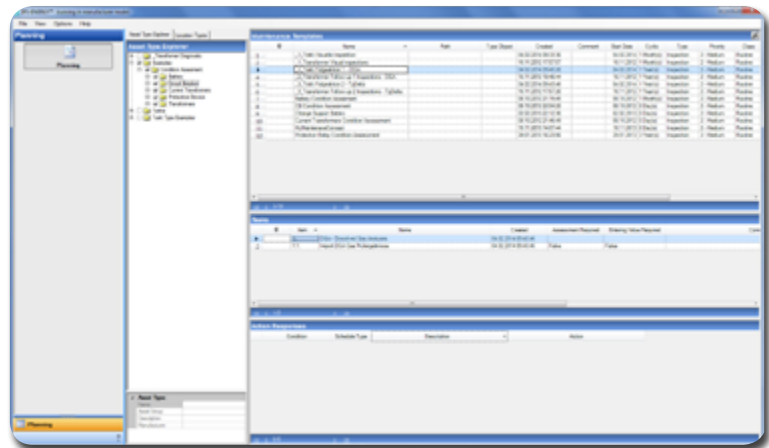
Relay and Instrument Transformer Planning and Scheduling

IPS-EPIS™ Enterprise | Included Module Groups

Maintenance Planning

(limited to protection and instrument transformer assets)
(more detailed information in chapter "IPS-Module Groups")

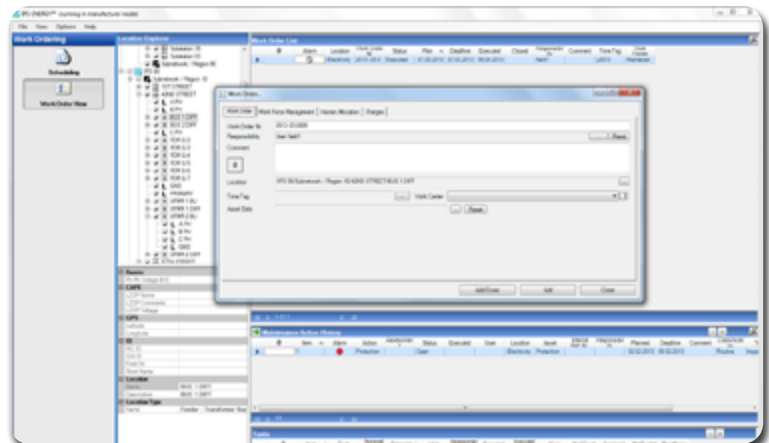
- Planning
- User defined maintenance plans
- User-friendly planning wizard
- Automatic plans based on action cycles
- Operational status overview about planned actions
- Easy creation of estimation plans
- Resource overview for entire planning
- Time-, condition- or logic-based planning



Work Ordering

(limited to protection and instrument transformer assets)
(more detailed information in chapter "IPS-Module Groups")

- Scheduling and Work Order View
- Standalone or integrated with ERP
- Work order management system for operational maintenance activities
- Work plan implementation and work scheduling
- Control of plan execution
- Resource spending management
- Actual and nominal resource spending per work order
- Operational actions and tasks assigned to work orders



Maintenance Analysis

(limited to protection and instrument transformer assets)
(more detailed information in chapter "IPS-Module Groups")

- Maintenance evaluation
- Maintenance accomplishment supervision and reporting
 - Planned - not executed
 - Planned - executed
 - Not planned - but executed
- Overview about all maintenance improvements and follow-up actions
- Management of maintenance process/concept improvements

