

IPS-ENERGY™ Web Suite

Web application as extension of IPS-SYSTEMS™



IPS-ENERGY™ Web Suite is a web-based mobile expert system for technical Asset Management and mobile Maintenance Management which is available as an extension of the standard IPS-SYSTEMS™ Editions.

Highlights

Global Availability
Browser + Internet = Access

Minimization of IT Maintenance

Optimized for low performance hardware or PDA, Tablets etc...

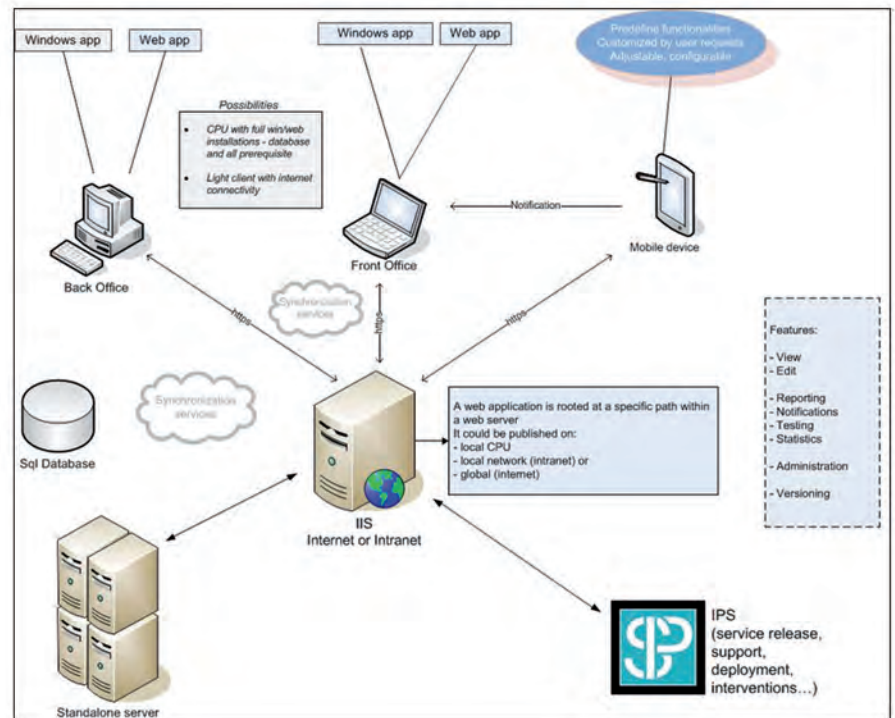
Light weight application which offers simplicity for a specific kind of users

True platform independence

No complex data synchronization between server and clients

Addition to standard Windows IPS-SYSTEMS™ Application

Environment of IPS-ENERGY™ Web Suite:



Active Module: Work Execution | Work Order/Action Selector Page

Computers: dev-fen01.ips.com; Users: Power User; SQL Server(s): [local] DataBase(s): IpsEnergy208; Thread#Main0; Usent#Main0

Work Order/Action Selector Page

Work Order: Action History

Work Order Nr.: WO-5 | Name: Action IPS

Station Name: Standard MV Station (VDE1109) | Feeder Name: Feeder 1 | Asset Name: []

Internal Ref. Nr.: 588 | Work Center: Work Center IPS Lindau

Responsibility: Power User | Planned From: [] To: []

Show all status: | Show actions attached to Work Order:

Filter:

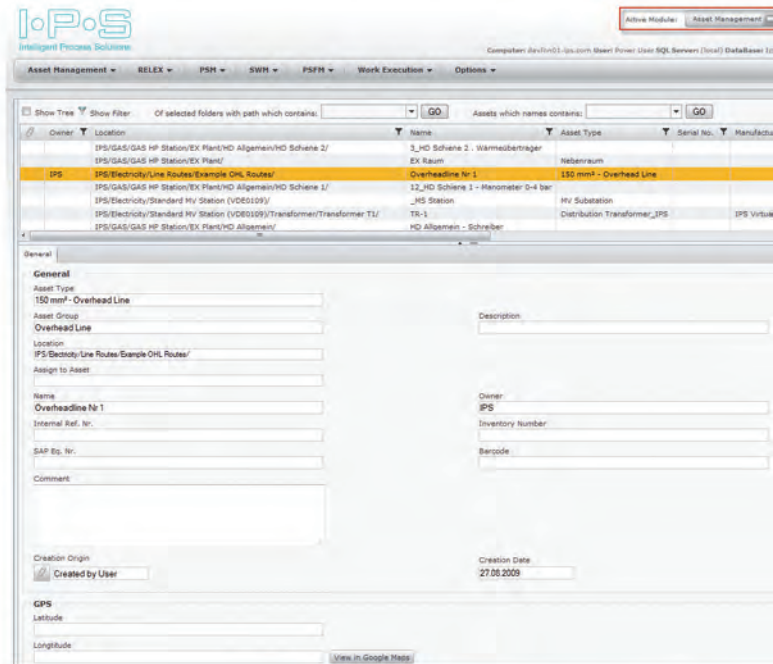
Item	Alarm	Name	Assessment Status	Executed	User	Location	Asset Name	Internal Ref.Nr.	Responsibility	Planned	Deadline	Comment	Classification	Type
1	Yellow	Wiring check	(not set)	Open		IPS/	75A611-TESTWeb...			4/9/2012	4/24/2012		Routine	Inspection
3	Red	Action template-Web Suite Protections	(not set)	Open		IPS/	75A611-TESTWeb...			1/2/2012	1/6/2012		Routine	Inspection
4	Green	Condition monitoring with VDE 0109 - 5.8 Protections & Measurement - Digital	(not set)	Open		IPS/	75A611-TESTWeb...			5/7/2012	5/11/2012		Routine	Inspection

Displaying items 1 - 3 of 3

Functionalities

Asset Management

- Overview about asset data
- Asset types overview
- Location overview



Work Execution

- Mobile Management for the accomplishment of maintenance & commissioning activities
- Overview about maintenance & commissioning notifications and follow-up actions
- Condition-based notifications
- Reporting possibilities
- Statistic functionalities
- Automatic documentation of all activities
- Management of work orders

